









# SPX424CDH



	SPX424CDH	 2030
	Abnehmbares Gewicht	200
	2.5T-D7	20
	PP400-4DX	45
	JIB800GX JIB800.1MX JIB800.1H1 MV600.3E	25 110 140 200

 Inklusive hydraulisch verstellbares Kettenfahrwerk


 3160 x 780 x 1875 mm



 3740 x 3740 mm




 2400 kg

 11,9 m

 15,0 m

 800 kg  
73 m - Ø 7 mm  
21-42 m/min


	
2400 kg	3 -20 m
1600 kg	2 -32 m
800 kg	1 -65 m

	KUBOTA D722E3B
	14,9kW 20Hp
	24 V / 240 Ah 4kW - 3F 400 VAC 50 Hz



 360° / 1,5 U/min

 2,6 m - 8,5 m / 26 sek.

 0°/75° / 14 sek.

 2200 kg

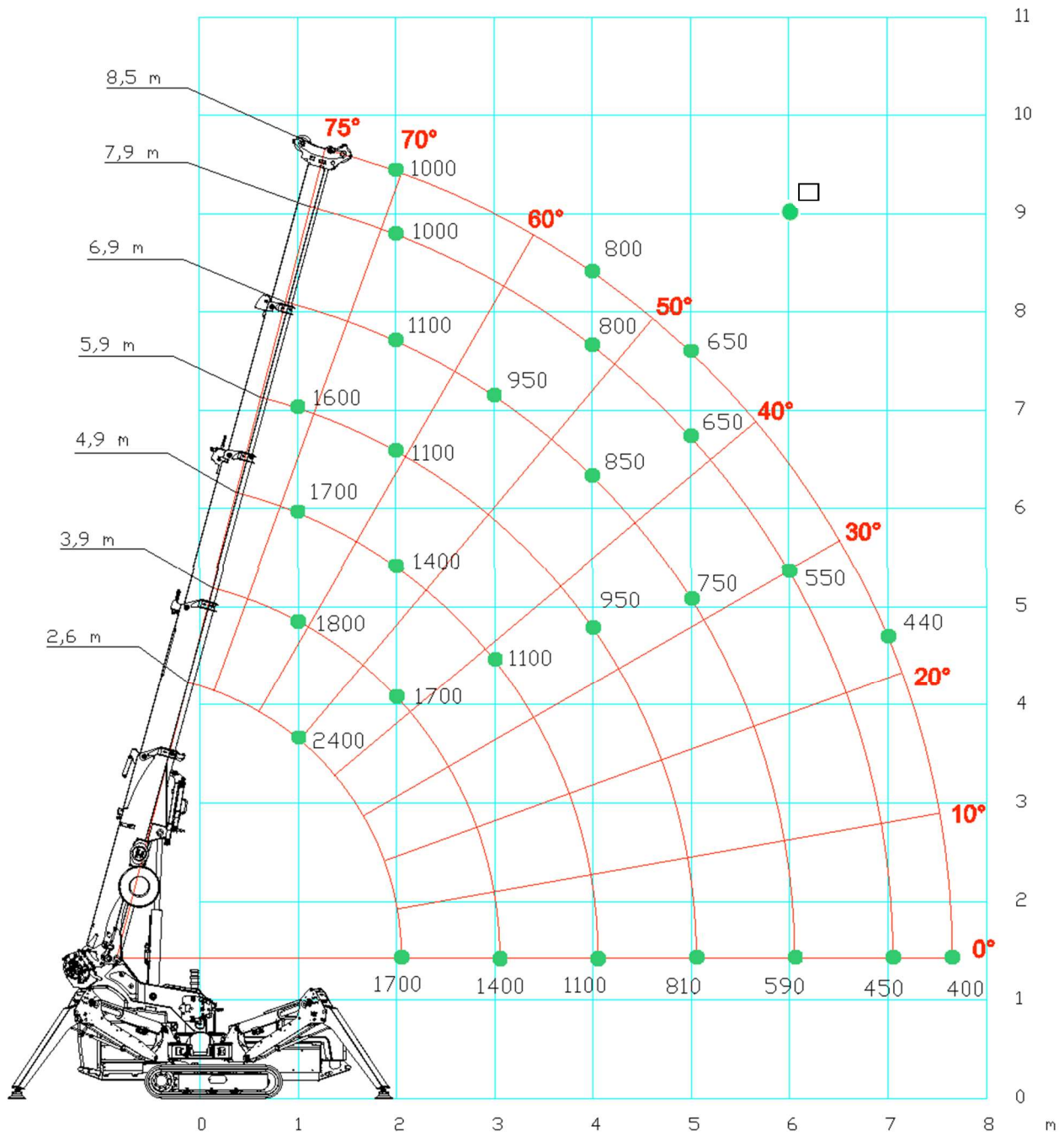
 3160 x 1065 x 1956 mm

 20°

 0,5 kg/cm<sup>2</sup>

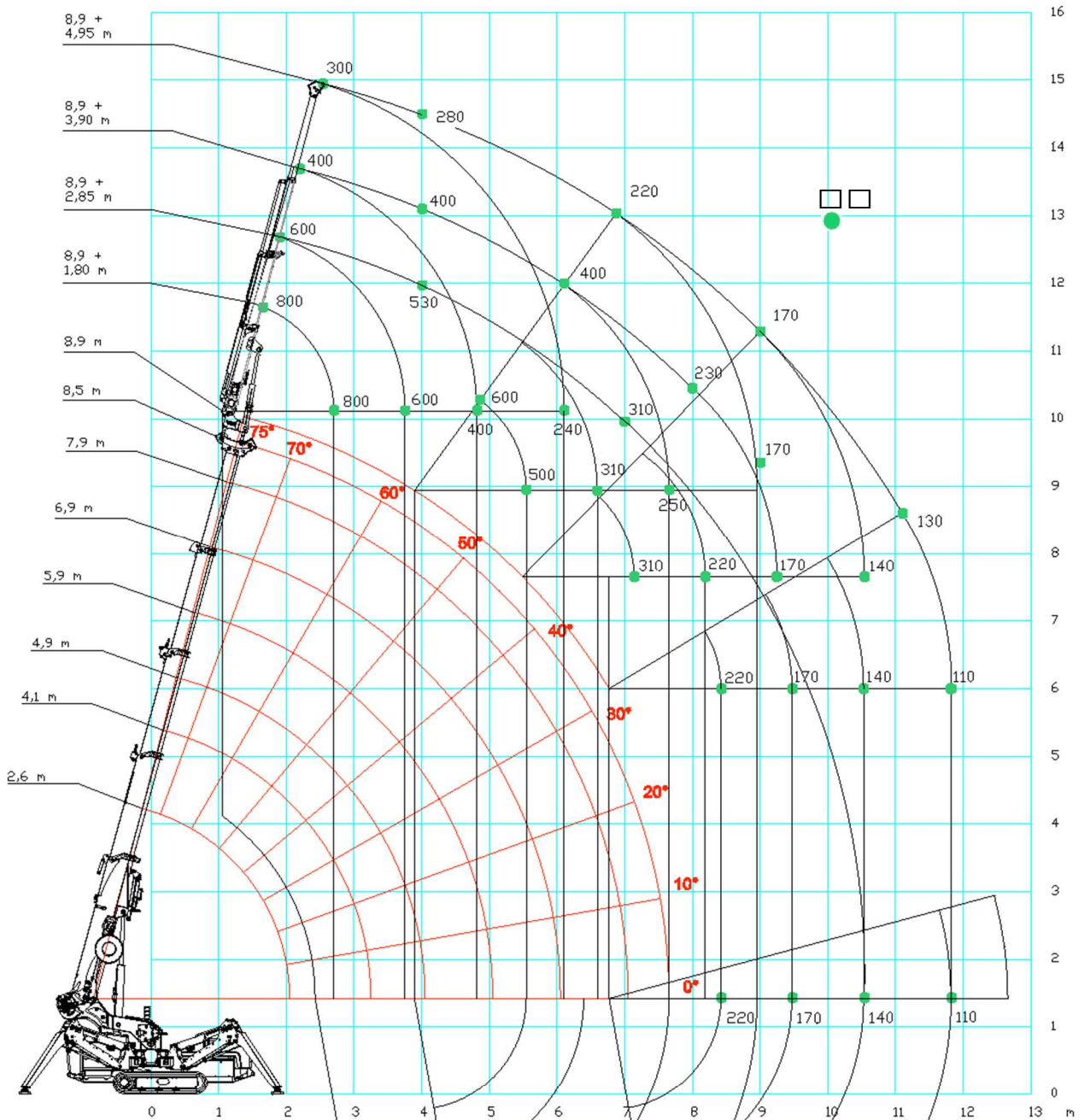
 1,8 km/h





# Hauptausleger



- 100%
- 360°
- 200 kg
- Winde

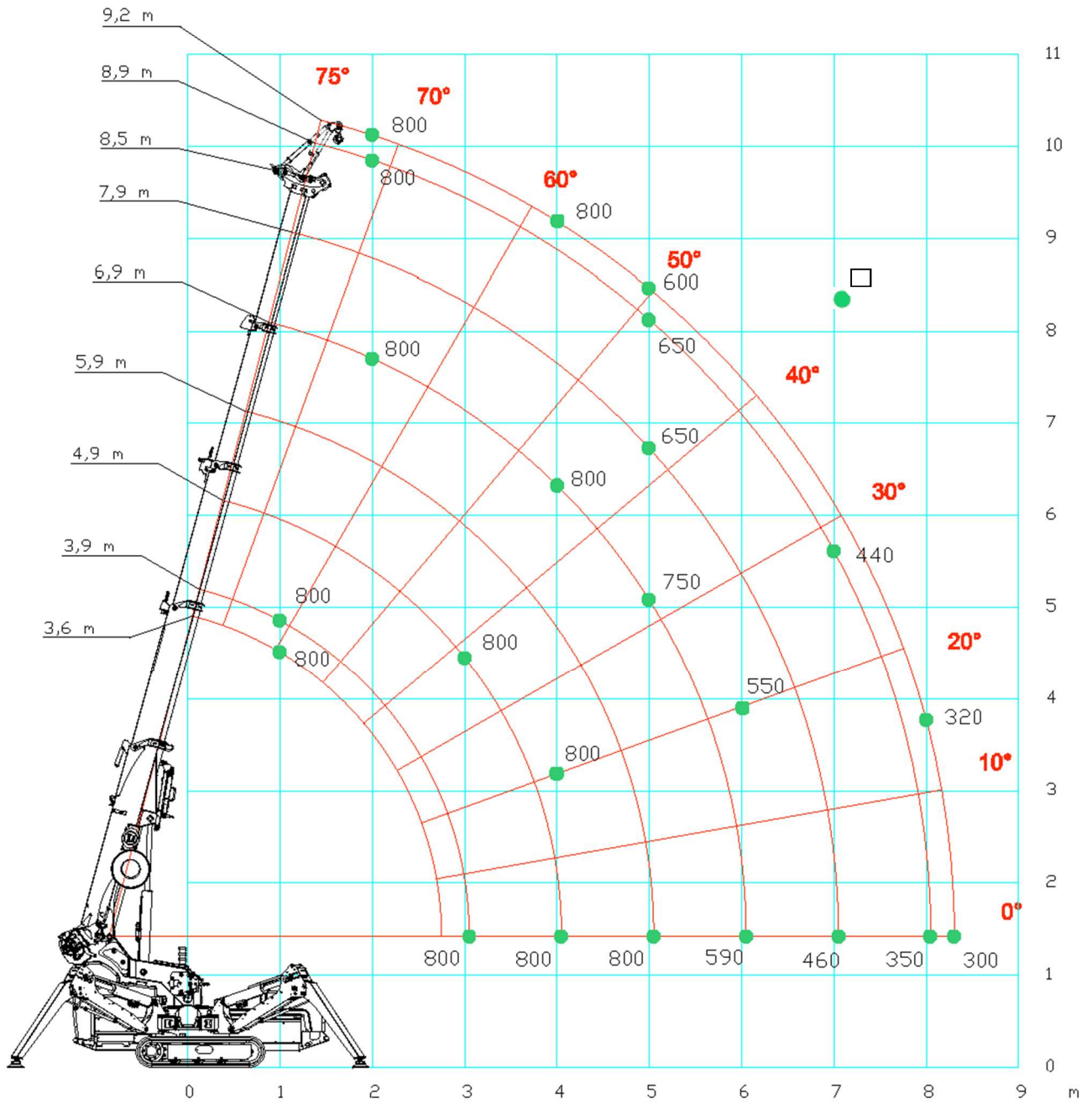
# Hakenmodus mit JIB800.2H1MX



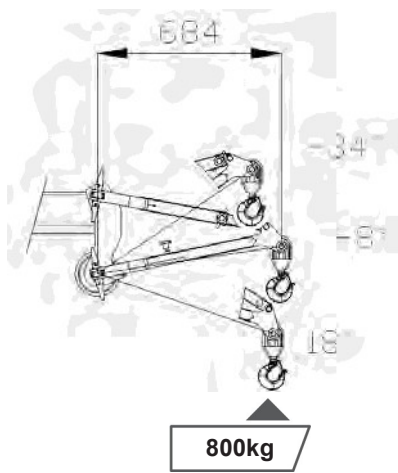
-  100 %
-  360°
-  1500 kg
-  Haken / Winde



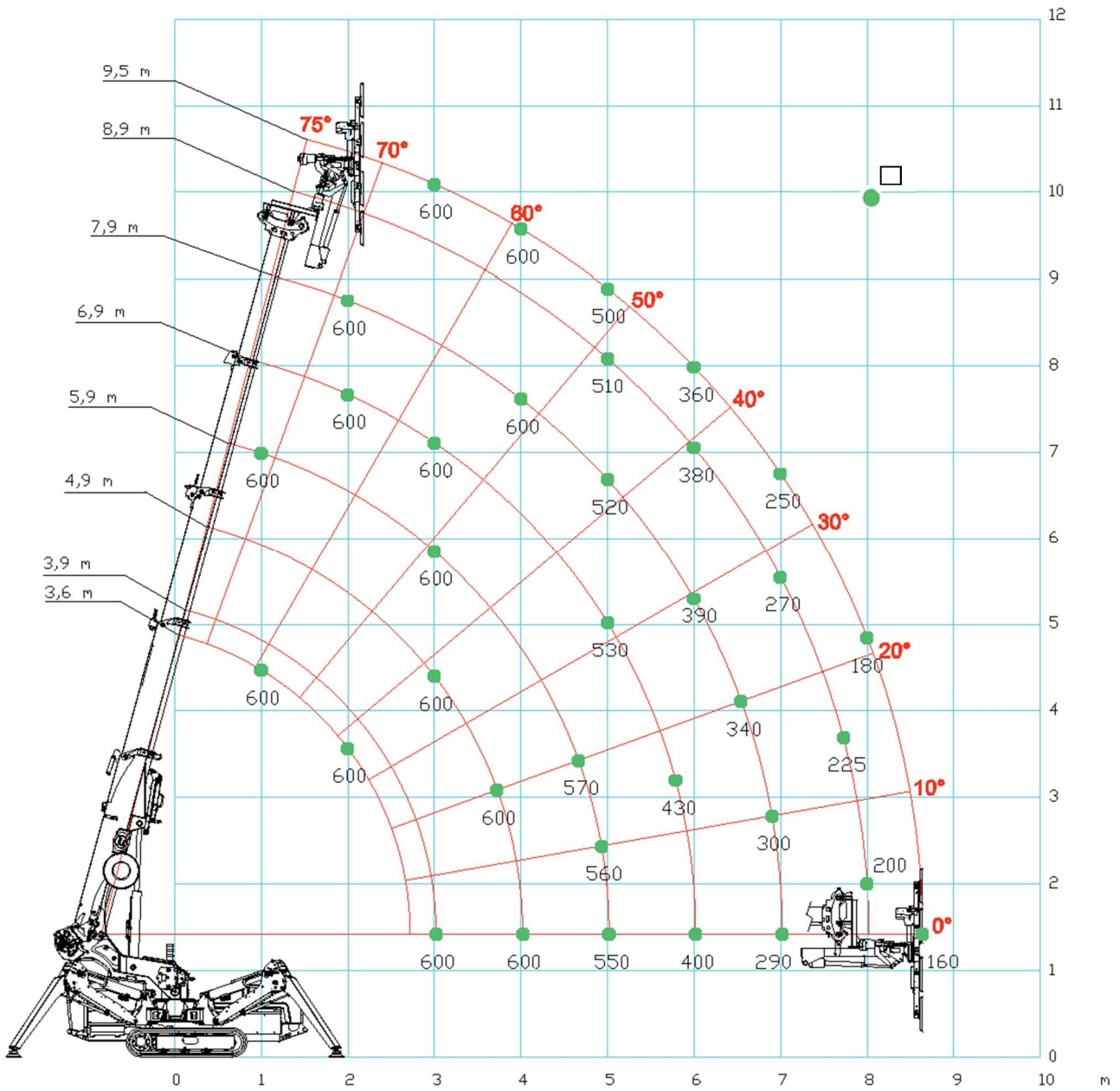
# JIB800GX



- 100 %
- 360°
- 1500 kg
- Haken

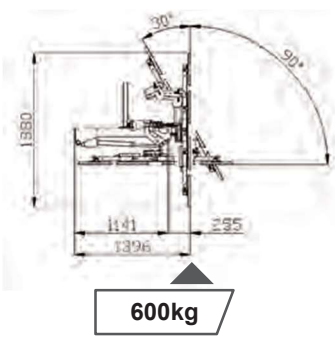


# MV600.3E

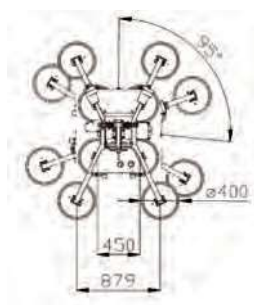


- 100%
- 95°
- 600 kg
- Manipulator

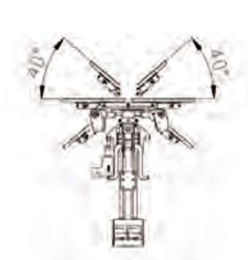
### Kippposition



### Drehposition



### Schwenkposition







# Sicheres Heben auf engstem Raum.



**Pfalzlift Haßloch**  
Langgasse 93, 67454 Haßloch  
Telefon: +49 6324 80577  
Telefax: +49 6324 5930025  
[info@pfalzlift.de](mailto:info@pfalzlift.de)  
[www.pfalzlift.de](http://www.pfalzlift.de)



Alle technischen Angaben unter  
Vorbehalt nach Datenstand 04.2016.